



House - Semi-Detached

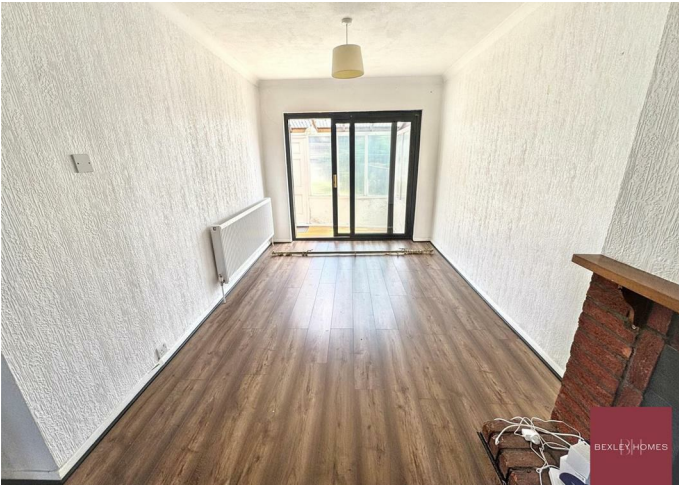
2 DOROTHY EVANS CLOSE, BEXLEYHEATH, DA7 6AJ

Per Month

£2,500

FEATURES

- Three bedrooms
- Spacious 24ft lounge/diner
- Separate fitted kitchen
- Conservatory
- Large private rear garden
- Private driveway for two cars
- Excellent transport links
- Close to Bexleyheath Broadway



3 Bedroom House – Semi-Detached located in Bexleyheath

3 Bedroom Family Home To Let – Dorothy Evans Close, Bexleyheath.

Available to rent is this well-presented three-bedroom family home, situated in a quiet residential location in the highly sought-after area of Bexleyheath.

The property offers spacious accommodation throughout, featuring a bright and airy through lounge/diner, a separate fitted kitchen, three well-proportioned bedrooms, a family bathroom and a conservatory overlooking the garden. Outside, the home benefits from a large rear garden, providing an excellent space for families, entertaining or enjoying the outdoors.

To the front, the property boasts a private driveway with off-street parking for two cars.

Excellent Location – Dorothy Evans Close is a quiet residential road conveniently located within easy reach of Bexleyheath Broadway, offering a wide range

Call us on

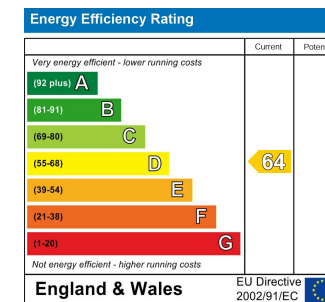
01322 948500

Belvedere@bexleyhomes.co.uk

www.bexleyhomes.co.uk

Council Tax Band

D



Agents Note: Whilst every care has been taken to prepare these particulars, they are for guidance purposes only. All measurements are approximate and are for general guidance purposes only and whilst every care has been taken to ensure their accuracy, they should not be relied upon and potential buyers are advised to recheck the measurements.

BEXLEY HOMES